

Concerto Op.6, No. 2

Arranged by Frederic Palmer

Arcangelo Corelli
(1653-1713)

Vivace

5

2



10 **Allegro**

3

15



20



25

30



35



40 **Adagio**

3

45



50

Vivace

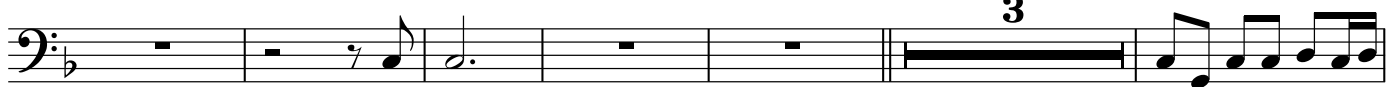
55



60

Allegro

3



65

70



Contrabass Recorder

75

80 85

90 95

2 **Adagio** **Largo andante** 100 **2**

105

Allegro 4 5 2 10

2 15

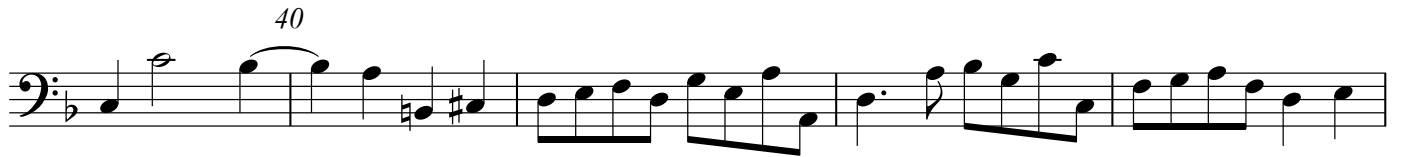
20

25


30 5 35



40



45




50



55 Adagio



Grave 5



Andante largo 10



15



Allegro 20



Contrabass Recorder

25
2

30
2 35

40

45 2 50

55

60

65 2

70